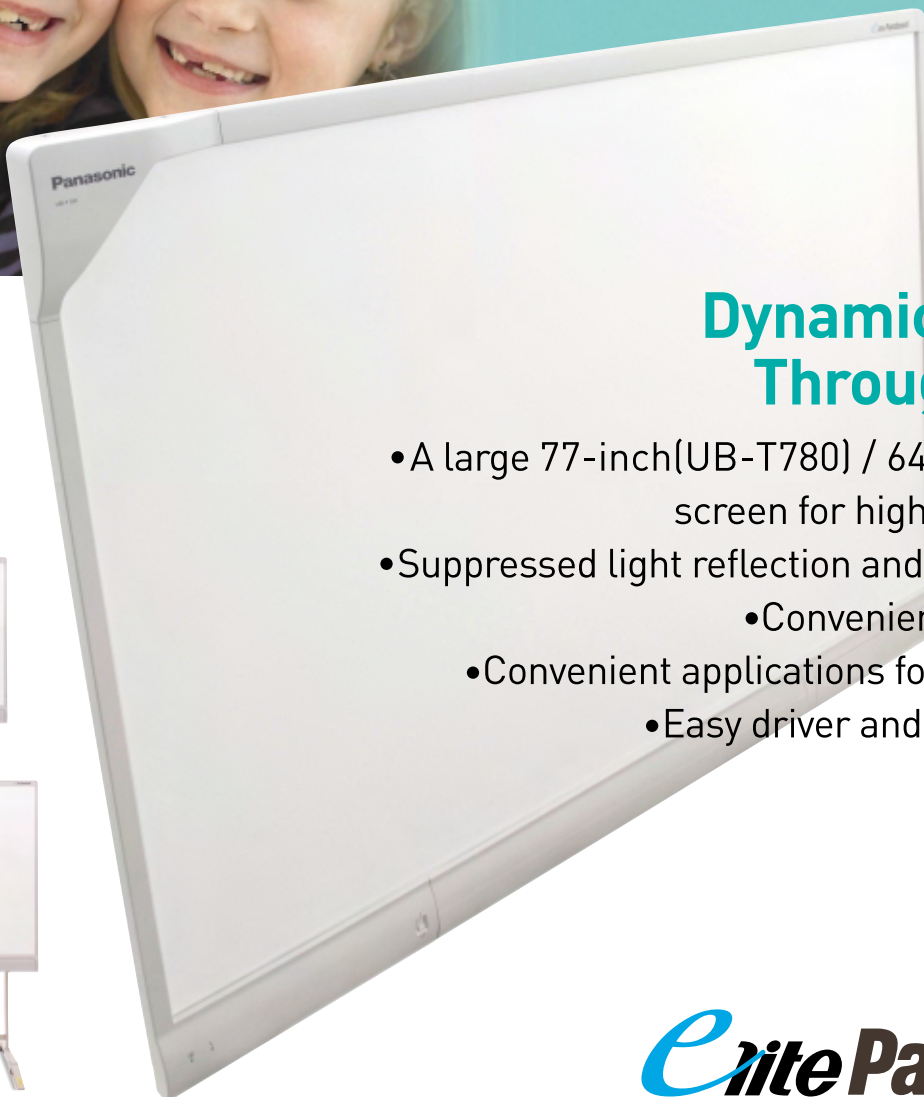


**Panasonic**  
ideas for life

Interactive Whiteboard  
**UB-T780 / UB-T760**



## Dynamic Learning Through Images

- A large 77-inch(UB-T780) / 64-inch(UB-T760) screen for high-impact lessons
- Suppressed light reflection and durable surface
  - Convenient electronic pen
- Convenient applications for classroom use
  - Easy driver and software set-up



UB-T760



UB-T780

*Erite* Panaboard

# Active, Visual-Based Education Makes the Classroom More Exciting

The elite Panaboard is an advanced educational tool that lets you grab students' attention. It makes it easy to create effective, eye-catching teaching materials and it promotes a style of active, visual-based teaching and learning that makes the classroom fun for both teacher and students.

By connecting a PC with Internet access and a projector, you can bring the huge amount of information available on the Web or any information on your PC right into your classroom.

Panasonic and the elite Panaboard open the door to a new kind of active, visual-based education.




## A Tool that Supports an Advanced, New Style of Teaching

- Animal photos, maps, and other images can be archived in the elite Panaboard's gallery for quick, easy retrieval and display.
- The electronic pen lets you create vividly coloured drawings and illustrations that make lessons come alive.
- With the elite Panaboard book's Attachment function you can organise teaching materials and Website addresses, making it easier to prepare lessons.
- Using a PC with Internet access, you can connect to the Internet and display information to the classroom.
- Teaching materials can be quickly produced and stored on a PC and displayed in the classroom.

**Too often, classroom lessons are dry and lacking in visual stimulation...**



**Change**



## **Conventional Teaching**

- Pasting animal photos, maps, or other visual aids on a board is slow, cumbersome, and dull.
- Lessons consist mainly of written text. There are too few colourful visual elements that can captivate and engage children.
- The same type of materials are used again and again, so lessons tend to become monotonous.
- Materials and information must be prepared far in advance.
- Good education begins with effective teaching materials – but these can be expensive to produce for every lesson.

---

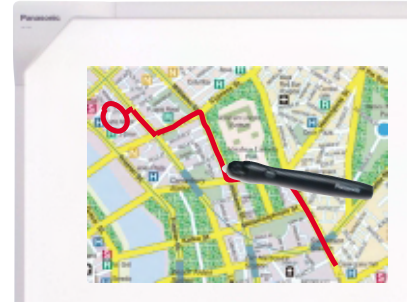
## Easier, Cleaner and More Convenient Multi-Functional Electronic Pen

The electronic pen developed by Panasonic puts new functions in the palm of your hand and makes the board a more effective teaching tool. Unlike with conventional whiteboard systems, Panasonic's electronic pen also works as an eraser – so you don't have to put it down and find a separate device every time you want to make a change. This also helps keep the board cleaner.



### It's Like Right-Clicking with a PC Mouse Easy Push-and-Press Operation

Simply pushing the button and pressing the pen tip to the board surface serves the same function as clicking the right button of a PC mouse. Pushing the button and quickly double-clicking the board changes the indication immediately to a pointer (arrow tool), even when using a different tool. This easy two-in-one operation brings greater convenience and efficiency to the classroom.



---

## Long-Life Surface with Minimal Reflection Board Designed for Extra Durability and Reduced Glare

The board is built tough enough to withstand vigorous everyday use and, because it has no electronic components, slight scratches do not affect operation. The surface is also made of a special material that minimises light reflection, so there is little glare and projected images are easy to see.



---

## Easy Operation of PC Software Presentation Mode

The elite Panaboard lets you use teaching materials created with other PC applications. Your favourite applications and the elite Panaboard book combine to form a powerful tool for creating and displaying eye-catching materials that make teaching much more effective and learning more fun.



### Add Information Easily Screen Keyboard

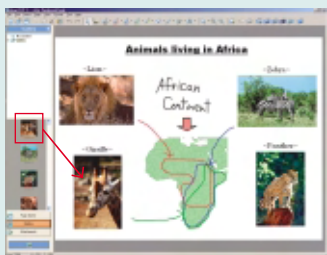
(Start from the Drawing Tool.)

A keyboard can be displayed on the elite Panaboard screen to allow operation of your PC keyboard. Using the elite Panaboard, you can easily add or change information on materials produced using applications on your PC. This minimises wasted time in the classroom, so you can make every minute count.

# Lessons Are More Engaging and Effective

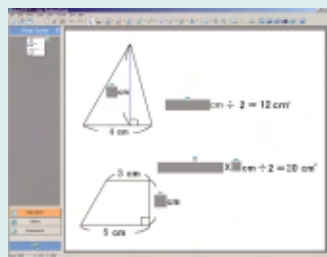
## Smooth, Easy Lesson Preparation elite Panaboard book

This contains Panasonic tools for creating and editing teaching materials. The variety of tools provided includes virtually everything you need to produce creative materials.



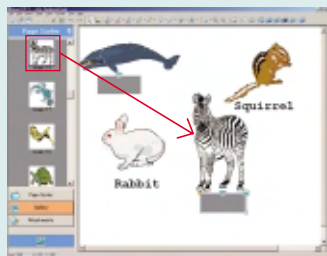
## Preparing Quizzes with Hidden Answers Shade

This tool lets you hide parts of text and illustration. It is useful for covering the answer while students engage in solving the problem.



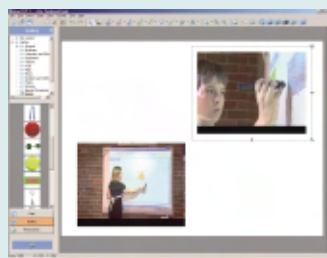
## A Host of Illustrations Gallery

The Gallery contains illustrations covering a wide variety of topics that you can use to create teaching materials.



## Adding Fun with Motion Images Video Data Support

Images (avi, wmv, mpg, mpeg, or swf) can be inserted into the elite Panaboard book and played back. Lessons are more engaging when they contain a variety of images.

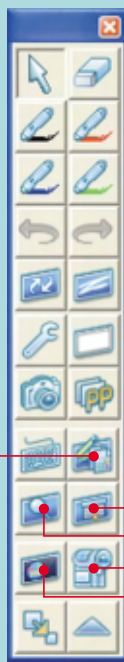


## Making Handwritten Characters Clearer Handwriting Recognition\*

Handwritten characters are converted into typed characters, right before your eyes.



\*An application is required for this function. For detailed information, please access the following URL: <http://panasonic.co.jp/pcc/products/en/eboard/elite/download.html>  
\*Some languages and characters may not be correctly recognised.



## Movable Toolbar Drawing Tool

From the toolbar you can select an icon to launch a software application. The toolbar can be set to remain on the screen at all times for instant access.

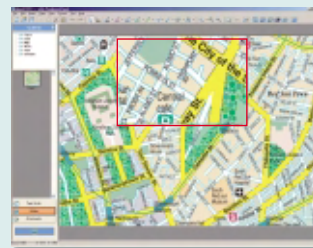
## Diverse Applications Screen Shade

The sliding shade can conceal a part of the screen or the entire display. One typical use is to cover up the answer or explanation while students try to answer a question or solve a problem.



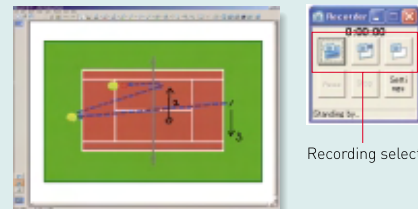
## Improve Viewing Ease Magnifier

Use this tool to enlarge a part of the screen. For example, it is handy for enlarging and showing a part or section of a map.



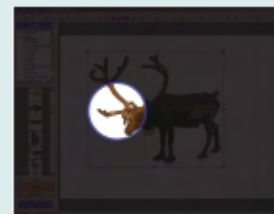
## Saving Lessons as Motion Images Recorder

With this function, you can record the entire screen or any part of it that you designate. It is convenient for recording lessons for later review. If you connect a microphone to the PC, you can also record voices simultaneously.



## Attracting the Students' Attention Spotlight

This tool lets you shine a spotlight on part of the screen. It is an effective way to attract the students' attention to a particular place on the board.



## UB-T780/T760 Specifications

General	UB-T780	UB-T760
Power Supply	AC 100 - 240 V, 50/60 Hz	
Power Consumption	0.1 A (Standby/Operational)	
External Dimensions* (HxWxD, without stand)	1,340 x 1,752 x 89 mm [52.8" x 69.0" x 3.50"]	1,142 x 1,489 x 89 mm [45.0" x 58.6" x 3.50"]
Panel Dimensions* (HxW)	1,175 x 1,692 mm [46.3" x 66.6"]	977 x 1,429 mm [38.5" x 56.3"]
Effective Area (HxW)	1,165 x 1,502 mm [45.9" x 59.1"]	967 x 1,238 mm [38.1" x 48.7"]
Weight* (without stand)	26 kg [57.3 lbs]	20 kg [44.1 lbs]
Panel Surface	PET coated metal plate	

### Interactive Function

Interface	USB 2.0
Battery for Electronic Pen	LR03(AAA size) x 1 Alkaline battery (included)
Position Sensor	Ultrasonic receiver & infrared rays sensor

\*Dimensions and weights are approximate.

Design and specifications are subject to change without notice.

Microsoft®, Windows®, Windows Vista® and the Windows logo are either registered trademarks or trademarks of Microsoft Corporation in the United States and/or other countries. IBM and AT are trademarks of International Business Machines Corporation in the United States, other countries, or both.

All other product/brand names, trademarks or registered trademarks identified herein are the property of their respective owners.

To run the elite Panaboard software, Microsoft .NET Framework 1.1 or later and DirectX 7.0 or later are required. When you install the elite Panaboard software on the CD-ROM, NET Framework 1.1 will be installed on your computer if it is not already installed.

The system requirements above do not meet the recommended specifications of all operating systems.

You must have Windows Media® Player 10 or later, or Adobe® Flash® Player installed to insert and play back video.

Inserting and playing back video is not supported in Windows 2000 SP4.

The handwriting recognition feature is supported in Windows Vista Ultimate, Windows Vista Home Premium, Windows Vista Business, and Windows XP Tablet PC Edition 2005.

If you are using Windows 2000 SP4 or later, or Windows XP Professional, you must have the Tablet PC SDK and Microsoft Windows XP Tablet PC Edition 2005 Recognizer Pack installed to use the handwriting recognition feature. For detailed information, please access the following URL.

<http://panasonic.co.jp/pcc/products/en/eboard/download/index.html>

The handwriting recognition feature is not supported in Windows Vista Home Basic and Windows XP Home Edition.

You must have sufficient available hard disk space to record and play back video.

### System Requirements

Computer	IBM®PC/AT or compatible machine with a CD-ROM drive
CPU	Pentium®4 or higher processor
Interface	USB 2.0
Operating System	Windows® 2000 (service pack4 or higher), Windows® XP, Windows Vista® (32 bit)
Memory	Windows® 2000: 256 MB or more Windows® XP: 512 MB or more Windows Vista®: 512 MB or more
Hard Disk	At least 200 MB free space (except saving space for data file)

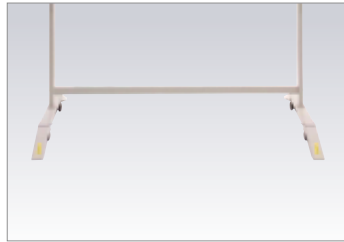
### Accessories

Operating instructions with installation manual, Power cord (3 m/10 ft.), Wall mounting plate, Electronic pen, Battery (LR03"AAA"), USB Cable (5 m/16 ft.), Penpoint, Software CD-ROM

## Option

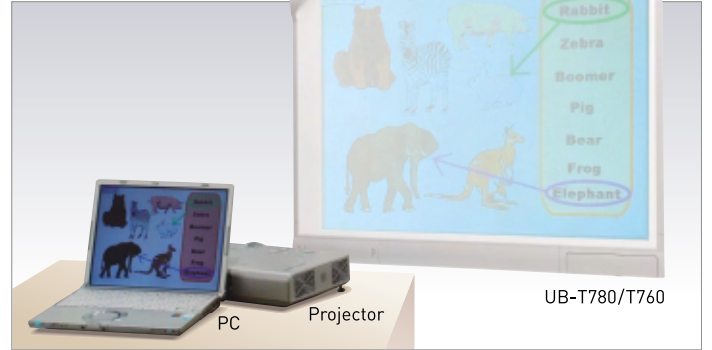


Electronic Pen (UE-608025)



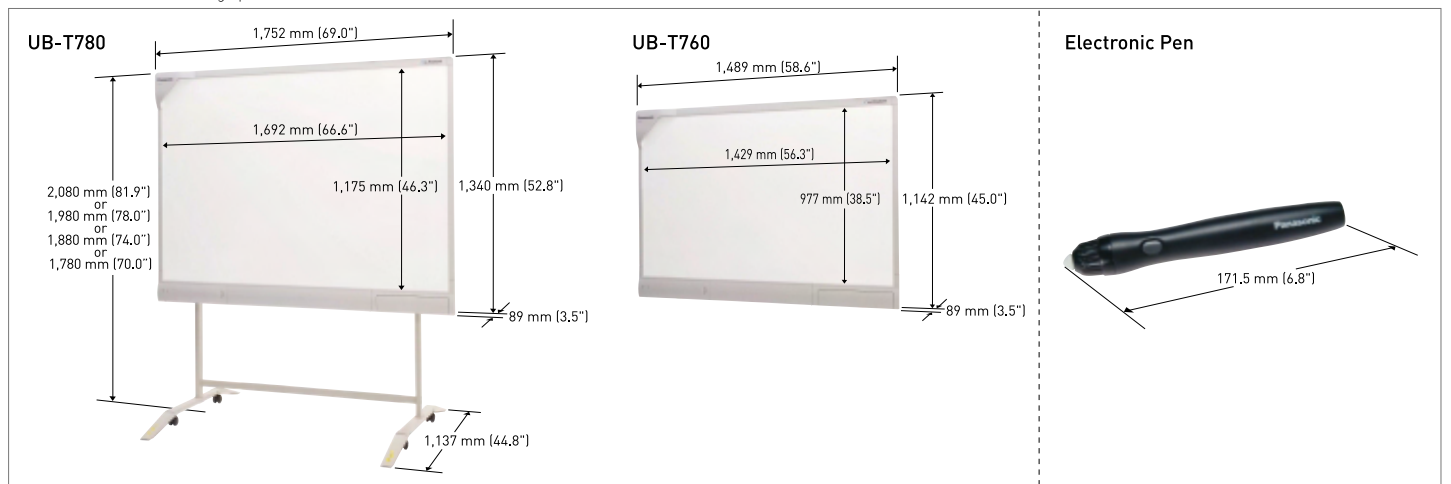
Stand (KX-B061) Only for UB-T780

## System



The UB-T780/T760 does not include a PC or projector.

## Dimensions (Including optional stand for UB-T780)



### For Safety

- To prevent the unit from falling, which can cause injury, remove it when it is no longer in use rather than leaving it installed.
- Do not alter the unit or modify any parts. Alteration or modification can cause fire or electric shock.
- Have the unit installed, removed and disposed of only by qualified service personnel.

### ISO 9001 Quality Management System

Our business processes which produce document, information and network products, from manufacturing to marketing, conform to ISO 9001 Quality Management Systems standard. Design, development, manufacture, installation, repair and maintenance of document, information and network products, their associated devices and consumables. In addition, the plants outside Japan have acquired ISO 9001 certification.

